



**element control
systems**

commercial louvres,
solar shading, ventilation
& fire protection

CHEVRON SERIES DOUBLE PASS WEATHERPROOF LOUVRE SYSTEM

24 Woodlands Terrace
Edwardstown SA 5039
sales@ecsystems.com.au
phone 08 8374 0381

www.ecsystems.com.au



APPLICATIONS

ECS CHEVRON SERIES (Horizontal/vertical louvre System) is a double Pass system produced from Extruded Aluminium. Designed to aesthetically conceal wall-mounted intake and exhaust openings, associated with air conditioning and ventilation systems whilst providing high defence against wind and rain.

Given its stunning external appearance, the Chevron series is often used as a decorative cladding whilst still providing a weather proof facade/inlet. The versatility enables the system to be used in both horizontal and vertical configuration where the requirement is for a continuous effect across openings or as a screen to conceal plant and equipment.

Aesthetic and architectural appearance

The **Chevron Series Double Pass Louvre** may be installed as individual panels both Horizontal and vertically with no limits to height or widths with unique internal drainage system. The systems exclusive configuration and spacing provides privacy, with the chevron series being non-transparent from inside and out.

Economic

Cost savings result from the ability to meet exact requirements with versatile standard components.

The unique design and state of the art engineered machinery enable the louvre system to be manufactured in lengths of up to 2500mm wide and height is unlimited, not compromising quality or structural integrity.

This benefit enables us to provide faster turnaround times and cost reductions with on site installation.

Optional accessories

Louvre Doors, bird, vermin guards, insect mesh, blanking panels, insulation panels, flashings and trims are available.

Material finishes

Powder - coated / anodised

Principle of operation

The **Chevron Series** double pass louvre is a Horizontal or Vertical positioned louvre ventilation system, designed to meet harsh Australian conditions with respect of wind and rain defense. The louvre utilises its special shape and interlocking feature to achieve optimum air-flow and rain elimination whilst providing a very robust structural configuration to meet all wind load and external challenges.

PERFORMANCE DATA / TECH DETAILS

The **Chevron Series** Louvre system is manufactured to meet the requirements of Australian Standards AS 4740

With respect to:

- Rain Penetration Classification
- Aerodynamic area / Pressure drop
- Wind loading

Technical Details

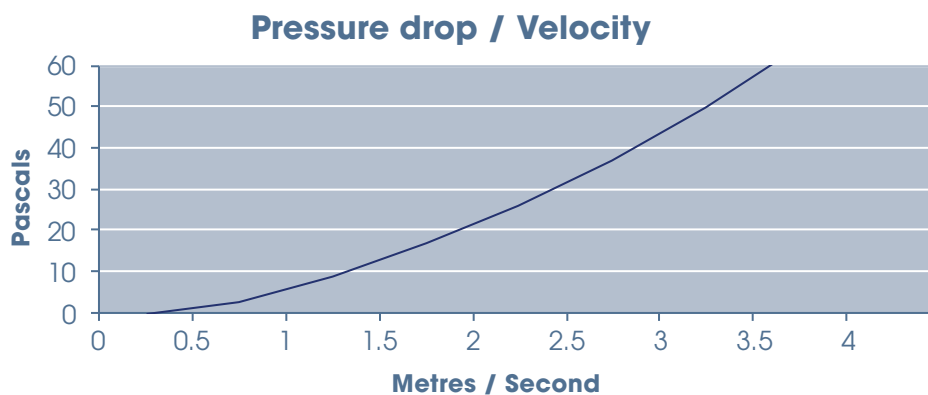
Louvre Pitch: 65mm standard (can be adjusted)
Depth: 98mm
Free open area: 50%
Blade span: 2500mm
Weight: 11 Kilograms m ²

TYPICAL SPECIFICATION

Louvres shall be Element Control Systems **Chevron Series**, Double Pass horizontal / vertical louvre system manufactured from Extruded aluminum 6060 alloy. Finish can also be applied via powder coating or anodising. Various warranties available.

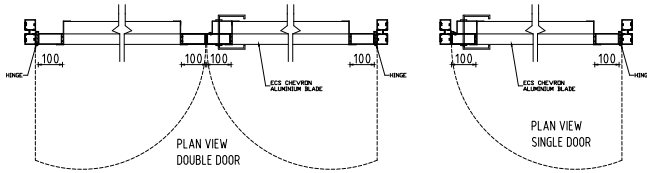
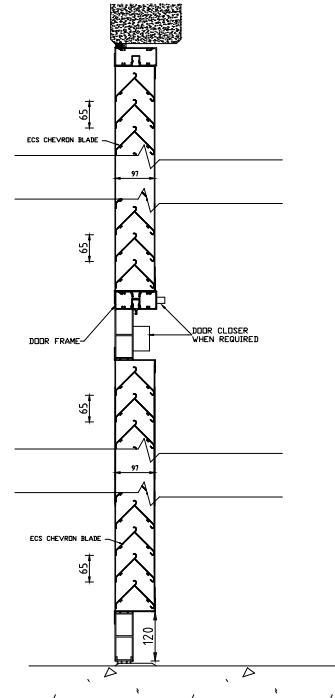
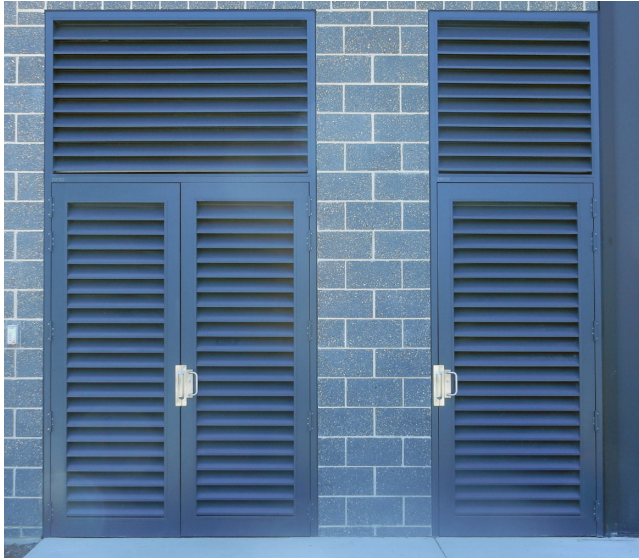
The louvre system depth shall be 98mm overall with blades at 65mm pitch.

Pressure drop/ airflow

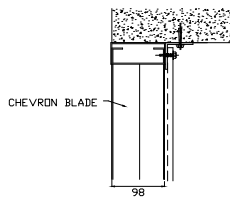


TYPICAL SPECIFICATION

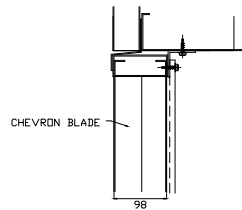
Horizontal applications



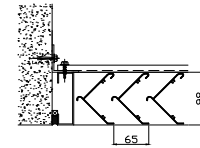
Vertical applications



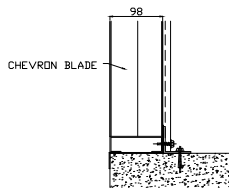
ECS CHEVRON VERTICAL SERIES
HEAD INTO MASONRY



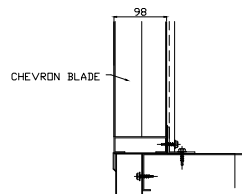
ECS CHEVRON VERTICAL SERIES
HEAD INTO CLADDING



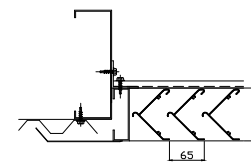
ECS CHEVRON VERTICAL SERIES
JAMB INTO MASONRY



ECS CHEVRON VERTICAL SERIES
SILL INTO MASONRY



ECS CHEVRON VERTICAL SERIES
SILL INTO CLADDING



ECS CHEVRON VERTICAL SERIES
JAMB INTO CLADDING